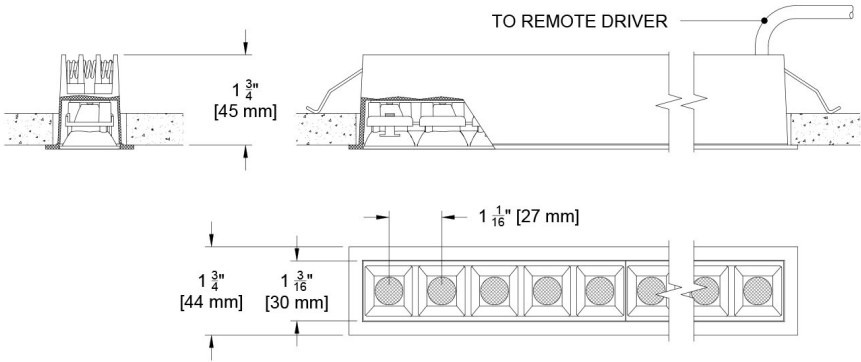
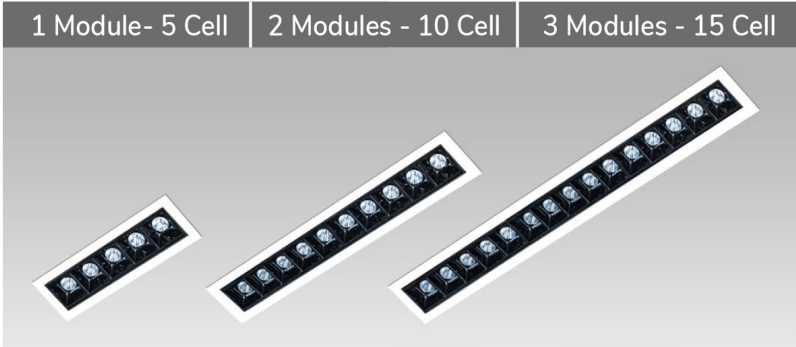


The Slice Family

Illuminate your space with precision Slices of glare free light. The Slice family offers linear 1" and 2" wide profiles in recessed and surface options. Our 1" recessed delivers over 1700 lumens per foot in a choice of 5, 10 or 15 cell configurations. This family member features a defined single piece housing and avoids the end caps used in the continuous sister product. The unobtrusive fixture features incredibly low glare values (UGR ≥10). Offered with multiple flange finishes, 3 CCTs, 2 outputs and 3 beam options, the slice 1" packs a bunch in a small footprint.



PROJECT: TYPE:
SPECIFIER: DATE:

Key Points (SL1DE-MCFRC)

- Trim**
- 1" cells arrayed in 5 cell increments with 3 defined lengths (5, 10, 15)
 - 14 available trim flange finishes+ custom/RAL available
 - Flange construction integral with full housing. No end caps required as with the continuous version

- Source / Optics**
- Up to 1700 Lumens/foot
 - 3 beam spreads - 15°, 30° and 45°
 - 60+ lumens per watt/foot
 - Ultra low glare with UGR values <10
 - <3 MacAdam Steps (<3 SDCM)
 - CCT offerings - 2700k, 3000k, 3500k
 - 90+ CRI and 50+ R9
 - **IC/Airtight** Supports CA Title 24 part 6 compliance meeting JA8 requirements
 - Lifetime: L70B50>55,000 hours at 40°C Ambient

- Housing**
- **UL** Damp listed
 - **IC/Airtight** supporting CA Title 24 part 6 compliance to JA8 requirements
 - Chicago Plenum available

- Driver And Control**
- Remote Driver
 - 0.1% dimming availalbe in 0-10 or DALI-2 protocols
 - Flicker Free to IEEE 1789-2015 (low risk to no risk)
 - Universal 120v to 277v

Slice 1" Multicell Linear Downlight - S06 (6 Watt System)						
1" Slice		Length		Delivered Lumens		
Modules	Cells	US (in)	Metric (mm)	15°	30°	45°
N/A	1	1.1	27.1	98.5	109	104.8
1	5	5	136	493	542	523
2	10	11	271	985	1090	1048
3	15	16	407	1478	1635	1572
Slice 1" Multicell Linear Downlight - S011 (11 Watt System)						
Modules	Cells	US (in)	Metric (mm)	15°	30°	45°
N/A	1	1.1	27.1	133.7	147.6	146.7
1	5	5	136	669	749	736
2	10	11	271	1337	1476	1467
3	15	16	407	2006	2214	2201

Ordering Codes

PROJECT:SPECIFIER:

DATE:TYPE:QUANTITY:

Ordering Code Example: SL1DE-MCFRC-AF-10-SO13-30-45-SY1-P16

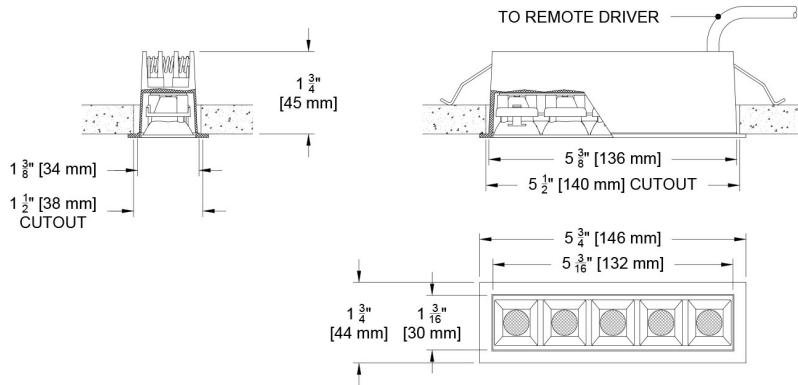
FIXTURE	MOUNTING	CELLS	SOURCE / WATTS	CCT	BEAM	DRIVER / CONTROL	TRIM FINISH	ACCESSORIES
SL1DE-MCFRC								
Slice 1" Linear Recessed Multicell Downlight (5, 10, 15)	<div>Flanged Housings</div> <div>AF Supports CA T24 part 6 compliance meeting JA8 Requirements</div>	<div>5 5 3/8" (137MM)</div> <div>10 10 5/8" (270mm)</div> <div>15 15 7/8" (403mm)</div>	<div>SO6 6W/ft* 1635Lm/ft* 90+CRI, 50+R9 Specialty Board</div> <div>SO11 11W/ft* 2214Lm/ft* 90+CRI, 50+R9 Specialty Board</div> <div>*Delivered Lumens based on tests performed at 3000K w/ 30° beam angle</div> <div>Supports CA T24 part 6 compliance meeting JA8 requirements</div>	<div>27 2700K</div> <div>30 3000K</div> <div>35 3500K</div>	<div>15 Spot</div> <div>30 Narrow Flood</div> <div>45 Flood</div>	<div>SY1 0-10 1.0%, UNV (120-277V) linear</div> <div>SY2 0-10* 1.0%, UNV (120-277V) log</div> <div>EldoLED</div> <div>E1 0-10 0.1%, UNV (120-277V) log</div> <div>E2 DALI-2 0.1%, UNV (120-277V) log</div> <div>E3 0-10 0.1%, UNV (120-277V) linear</div> <div>Note: Remote driver required for all fixture lengths. See Electrical Guide for wire run distances.</div> <div>*SY2 Log - Only available on 15 cell selection</div> <div>ELECTRICAL GUIDE LINK</div>	<div>Standard</div> <div>B Black Paint</div> <div>Optional</div> <div>W White Paint</div> <div>PXX Specialty Paint Color*</div> <div>P01-P15</div> <div>C Custom/RAL Color*</div> <div>Note: Baffle is black only</div> <div>*See Finish Guide</div> <div>FINISH GUIDE LINK</div>	<div>CP Chicago Plenum</div>

Ceiling Cutouts and Dimensions

SL1- Recessed Mount Multicell Housing

for 5 Cell

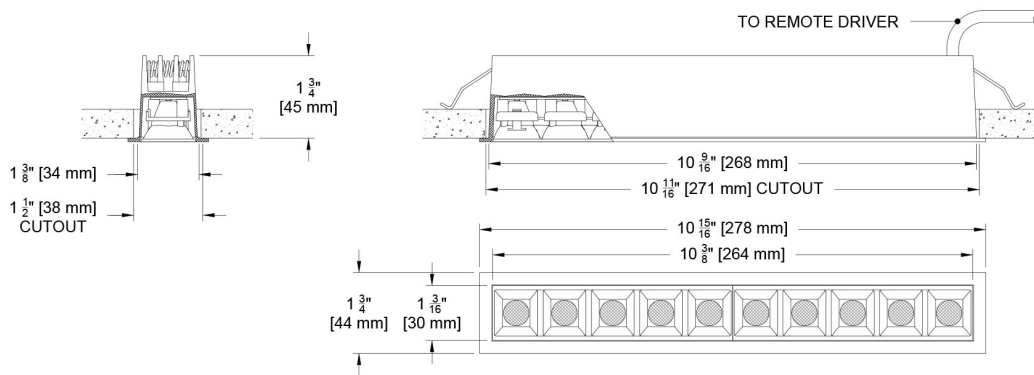
(SL1DE-MCFRC-AF-)



SL1- Recessed Mount Multicell Housing

for 10 Cell

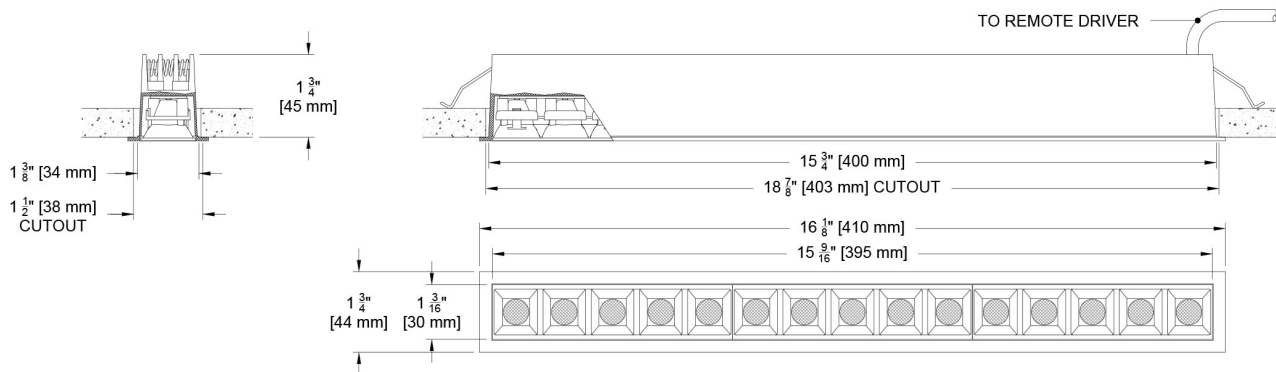
(SL1DE-MCFRC-AF-)



SL1- Recessed Mount Multicell Housing

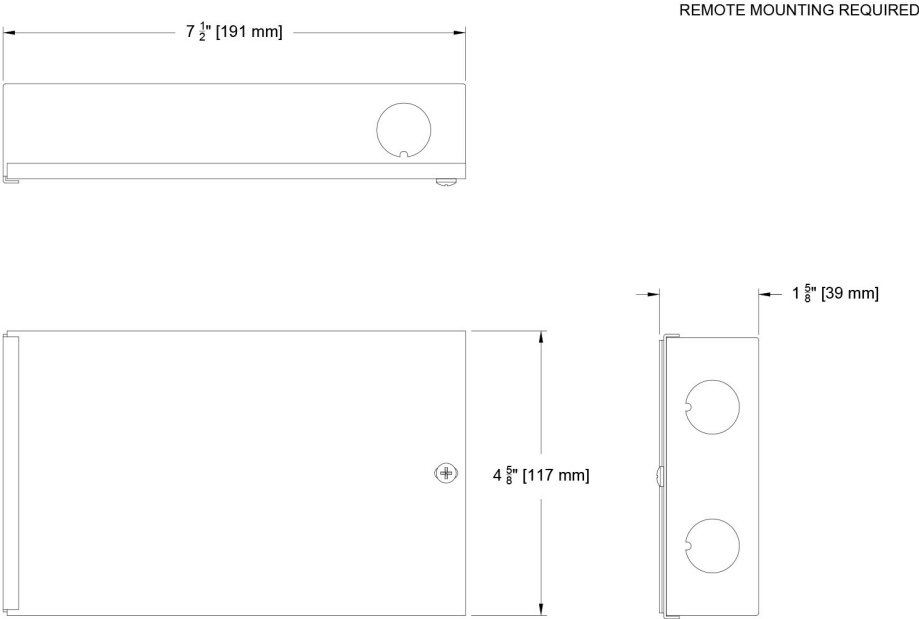
for 15 Cell

(SL1DE-MCFRC-AF-)

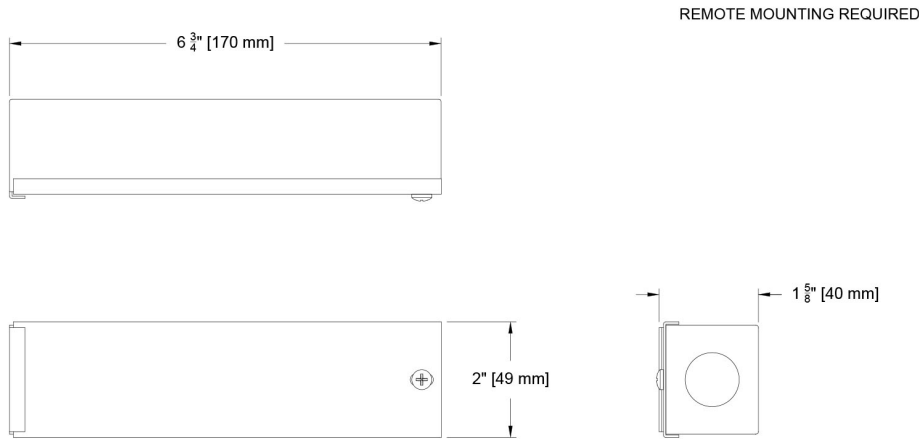


Ceiling Cutouts and Dimensions

Driver Enclosure for 15 Cell

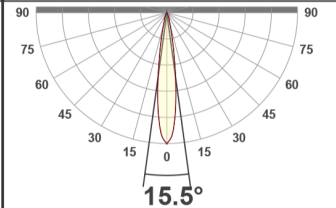
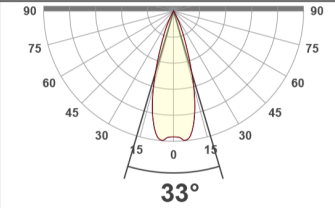
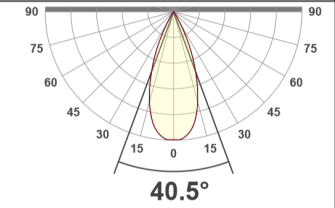
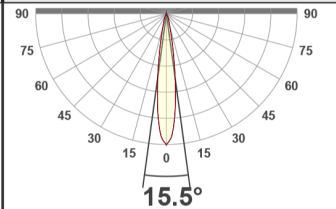
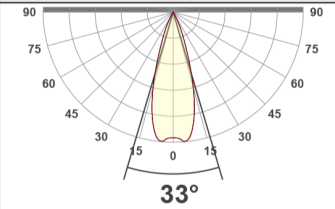
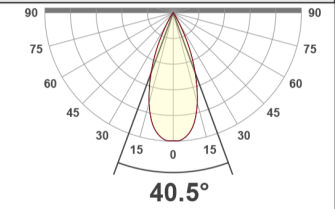


Driver Enclosure for 5 and 10 Cell



Photometric Table

Values and files shown are based on delivered lumens and system watts for a 5-cell module at 5.25" (133 mm). Data for 10-cell and 15-cell modules can be approximated by multiplying by 2 or 3, respectively. All data is based on goniometer measurements of production-representative product at 3000K CCT with a black baffle, and may vary by ±10% from the LED manufacturer's rated flux range.

Slice 1" Multicell Linear Downlight - S06 (6 Watt System)						
1" Slice		Length		Delivered Lumens		
Modules	Cells	US (in)	Metric (mm)	15°	30°	45°
N/A	1	1.1	27.1	98.5	109	104.8
1	5	5	136	493	542	523
2	10	11	271	985	1090	1048
3	15	16	407	1478	1635	1572
CCT Multiplier						
CCT	Citizen					
2700	0.95					
3000	1.00					
3500	1.05					
4000	1.1					
Slice 1" Multicell Linear Downlight - S011 (11 Watt System)						
1" Slice		Length		Delivered Lumens		
Modules	Cells	US (in)	Metric (mm)	15°	30°	45°
N/A	1	1.1	27.1	133.7	147.6	146.7
1	5	5	136	669	749	736
2	10	11	271	1337	1476	1467
3	15	16	407	2006	2214	2201
						

Color Data

All data is based from goniometer measurements of production representative product. All lumen values can vary +/- 10% from LED manufacturer rated data range. Measurements at 3000 CCT unless otherwise noted.

SO6 & SO11

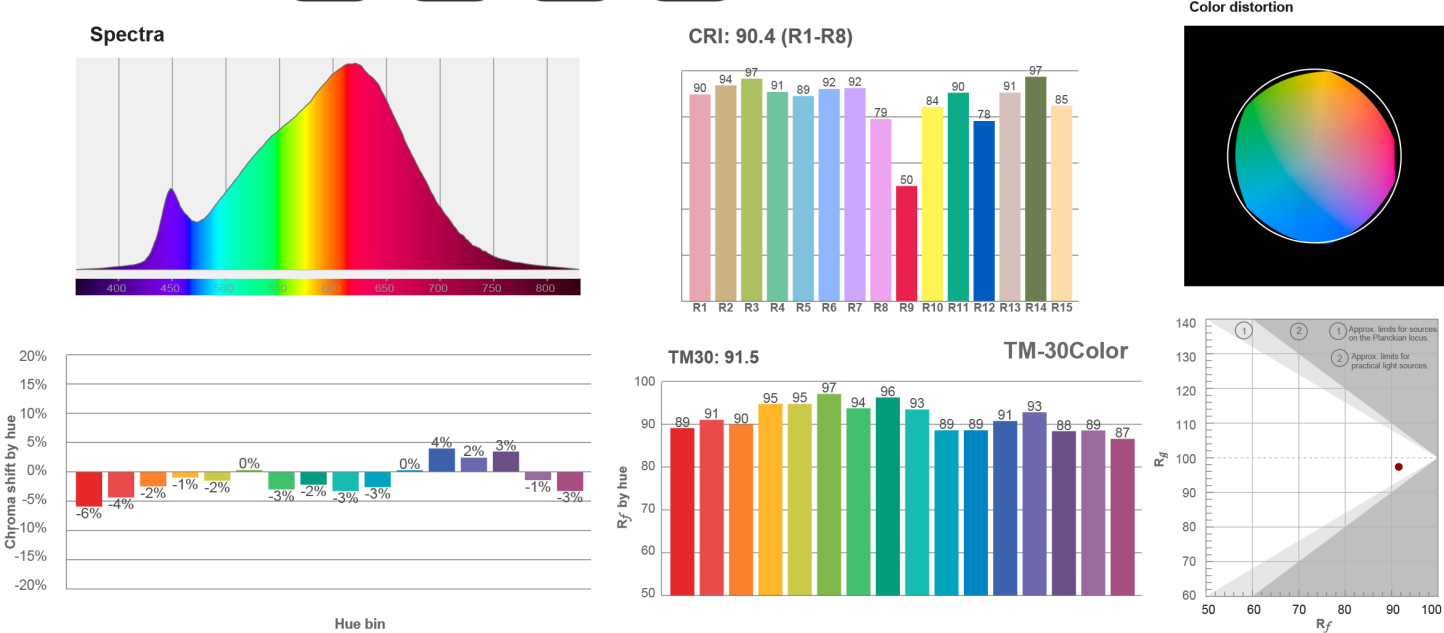
SO6 - 15°

90
CRI

50
R9

91
RF

97
RG



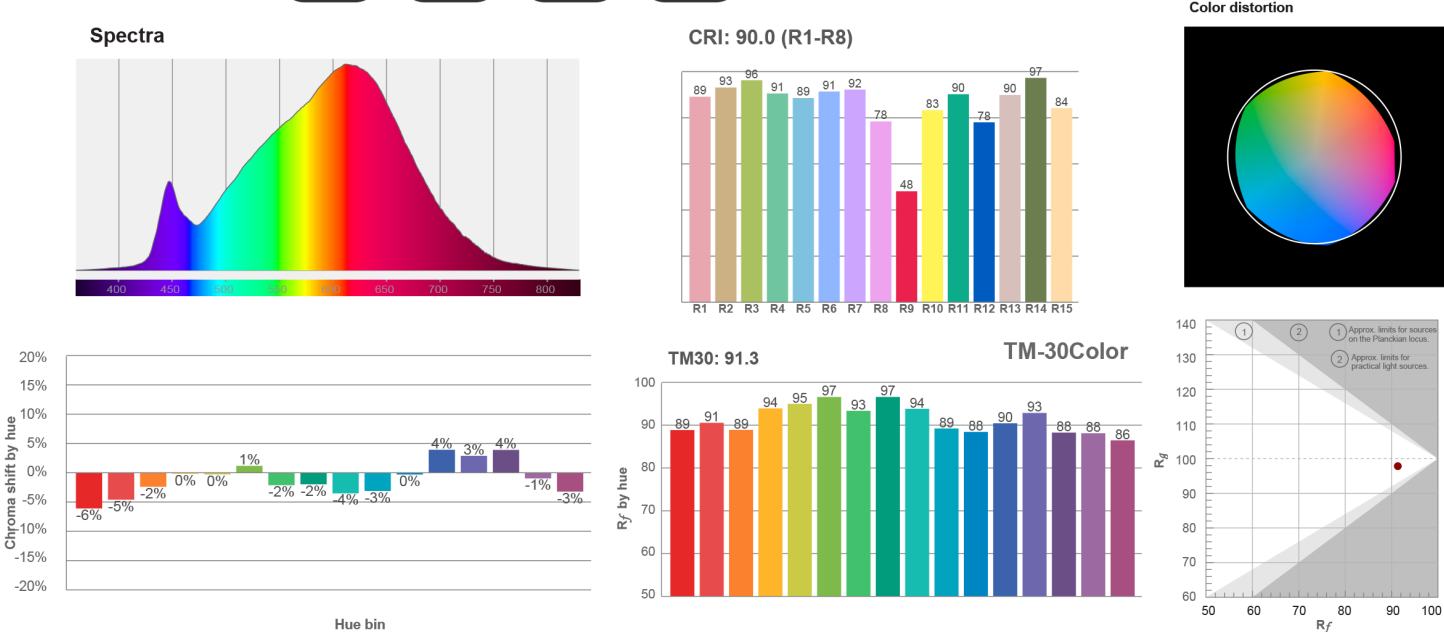
SO6 - 30°

90
CRI

48
R9

91
RF

98
RG



SO6 & SO11

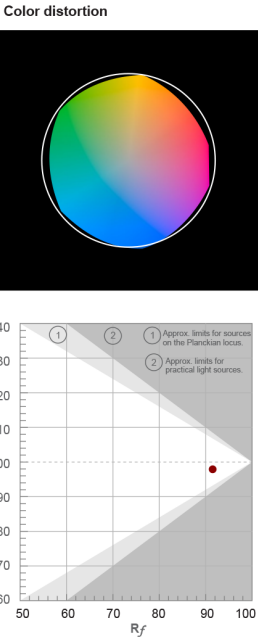
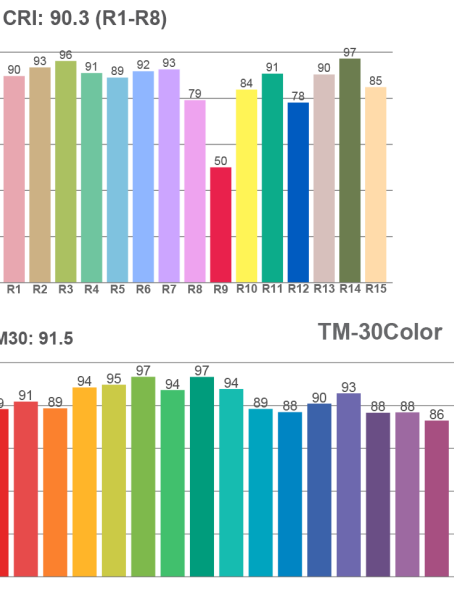
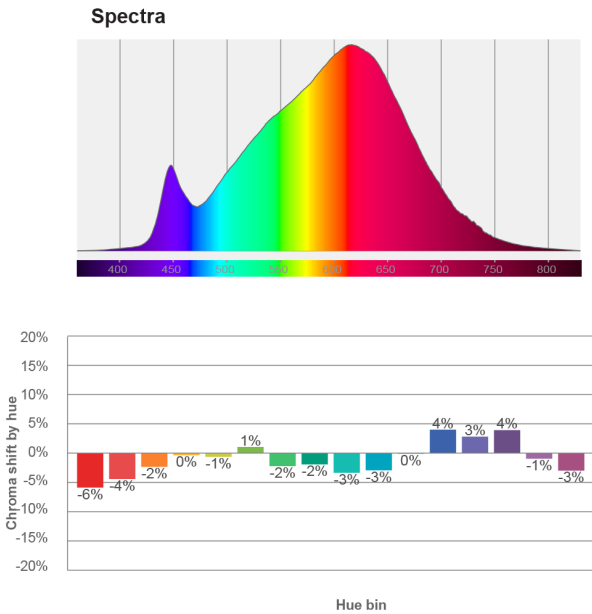
SO6 - 45°

90
CRI

50
R9

91
RF

99
RG



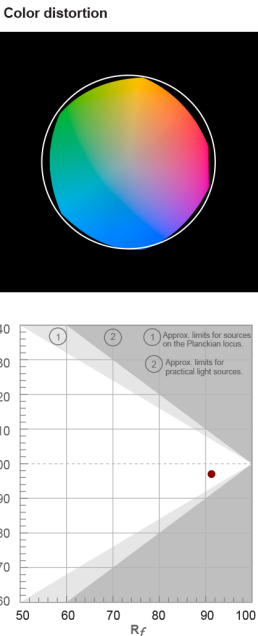
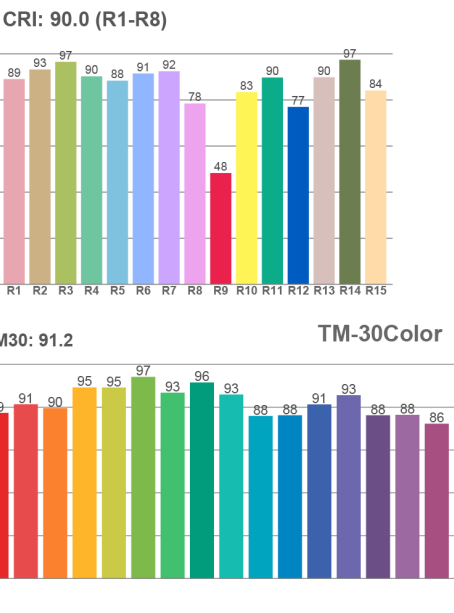
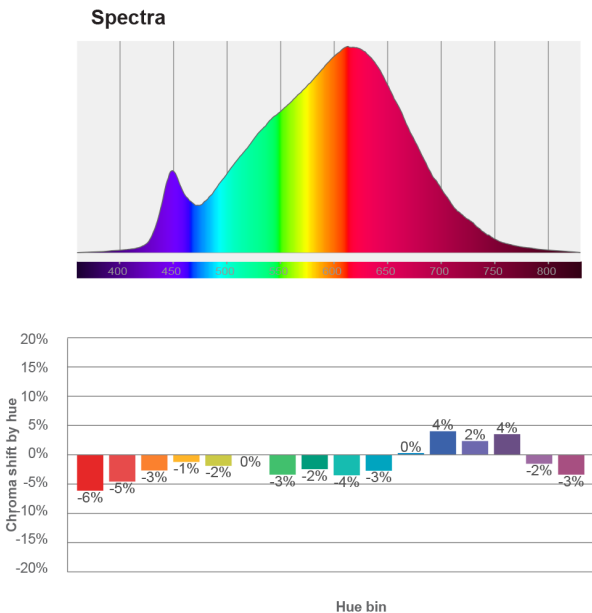
SO11 - 15°

90
CRI

48
R9

91
RF

97
RG



SO6 SO11

SO11 - 30°

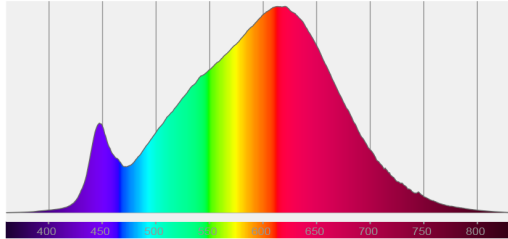
89
CRI

47
R9

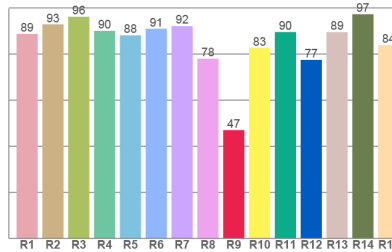
91
RF

98
RG

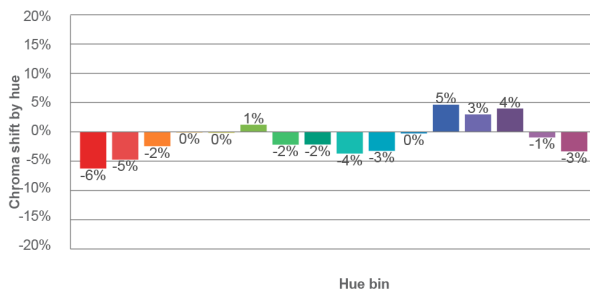
Spectra



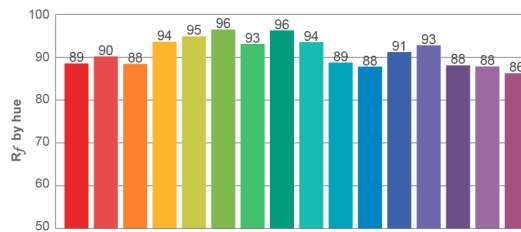
CRI: 89.6 (R1-R8)



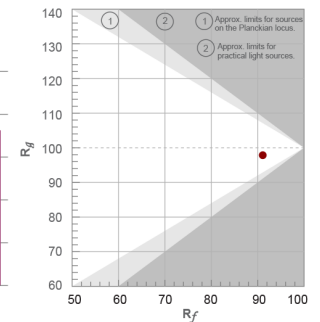
Color distortion



TM30: 91.1



TM-30Color



SO11 - 45°

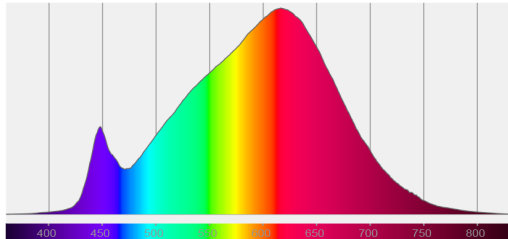
90
CRI

48
R9

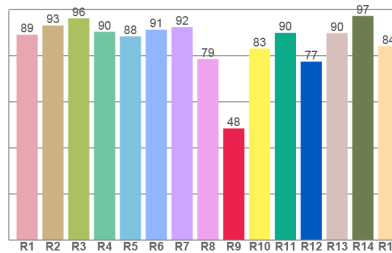
91
RF

97
RG

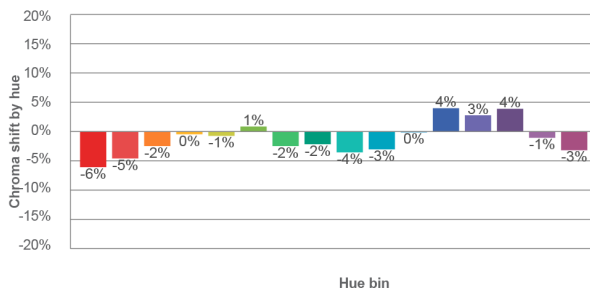
Spectra



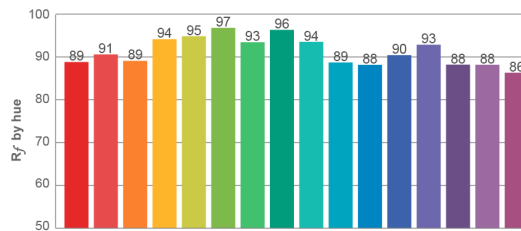
CRI: 89.9 (R1-R8)



Color distortion



TM30: 91.3



TM-30Color

